

# 1450

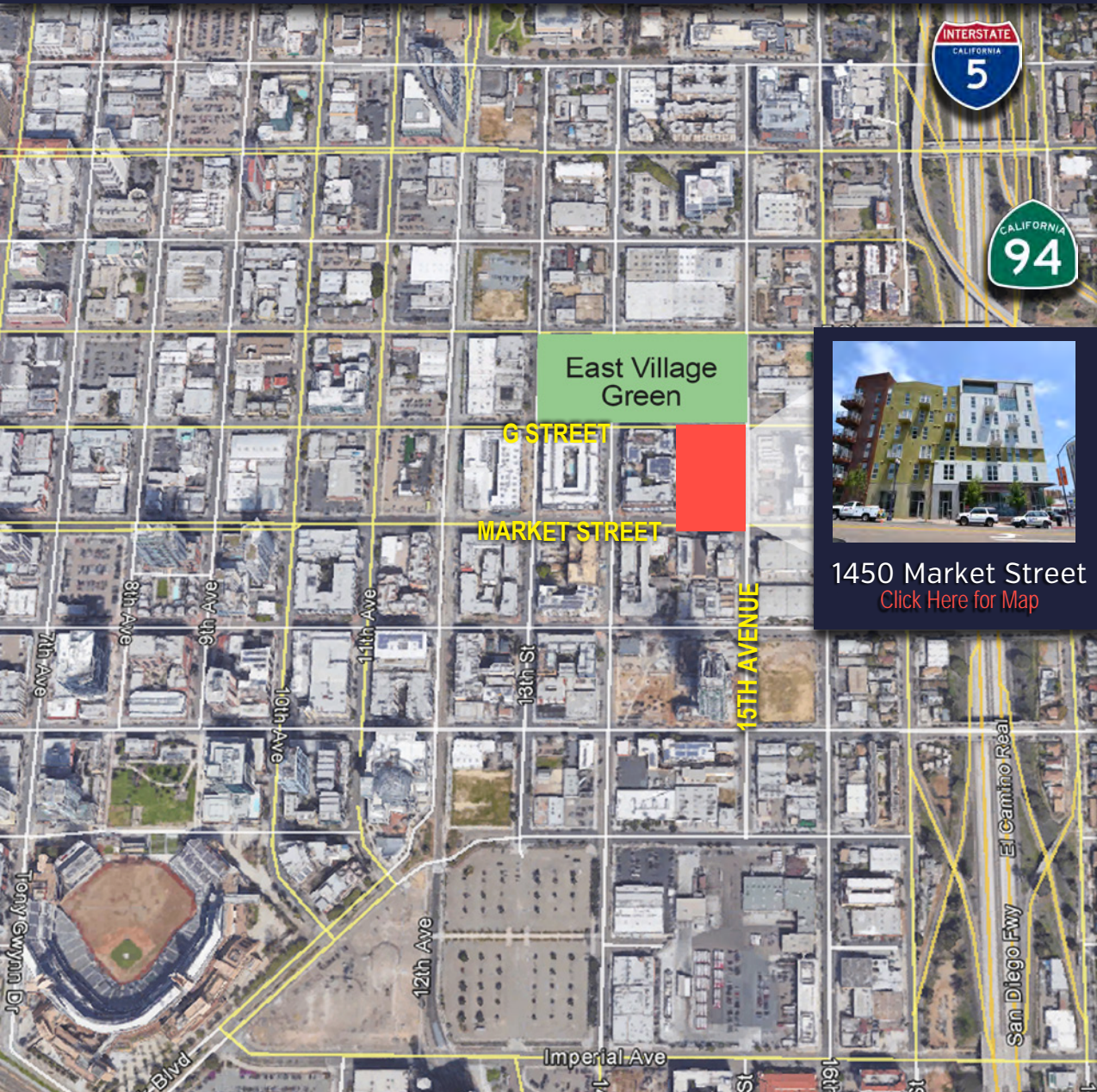
Market Street  
San Diego, CA 92101

FORM 15





# AERIAL MAP



1450 Market Street  
[Click Here for Map](#)

## DEVELOPMENT HIGHLIGHTS IMMEDIATE VICINITY:

- East Village Green – 4.1 Acre Public Amenity Site – Directly Across the Street from FORM 15
- Makers Quarter Employment Hub – 6 block development – 1 Million SF of Office, 800 Residential Units, and 175,000 SF of Retail
- Numerous other planned or in-progress projects, bringing new residential, office, hotel and retail product to the exciting East Village

## PROPERTY DETAILS:

- 1,162 - 1,456 SF of retail space available for Lease
- Prime East Village Retail Location, situated on the ground floor of a 241-unit residential project constructed in 2014
- Available space includes a highly-visible retail opportunity with 18-foot ceilings
- Positioned in the heart of numerous completed, underway and planned East Village development projects
- Office use permitted - Call for details
- Lease Rate: \$2.15/SF NNN

Frank Clark | Principal Broker

619.994.7136 | CA DRE # 01919315

[frank.clark@spireassets.com](mailto:frank.clark@spireassets.com)

**SPIRE**  
[www.spireassets.com](http://www.spireassets.com)

William Clemeno | Advisor

858.717.0172 | CA DRE # 02060538

[william.clemeno@spireassets.com](mailto:william.clemeno@spireassets.com)

The information presented here is deemed to be accurate, but it has not been independently verified. We make no guarantee, warranty or representation. It is your responsibility to independently confirm accuracy and completeness. All SPIRE businesses are independently owned and operated.



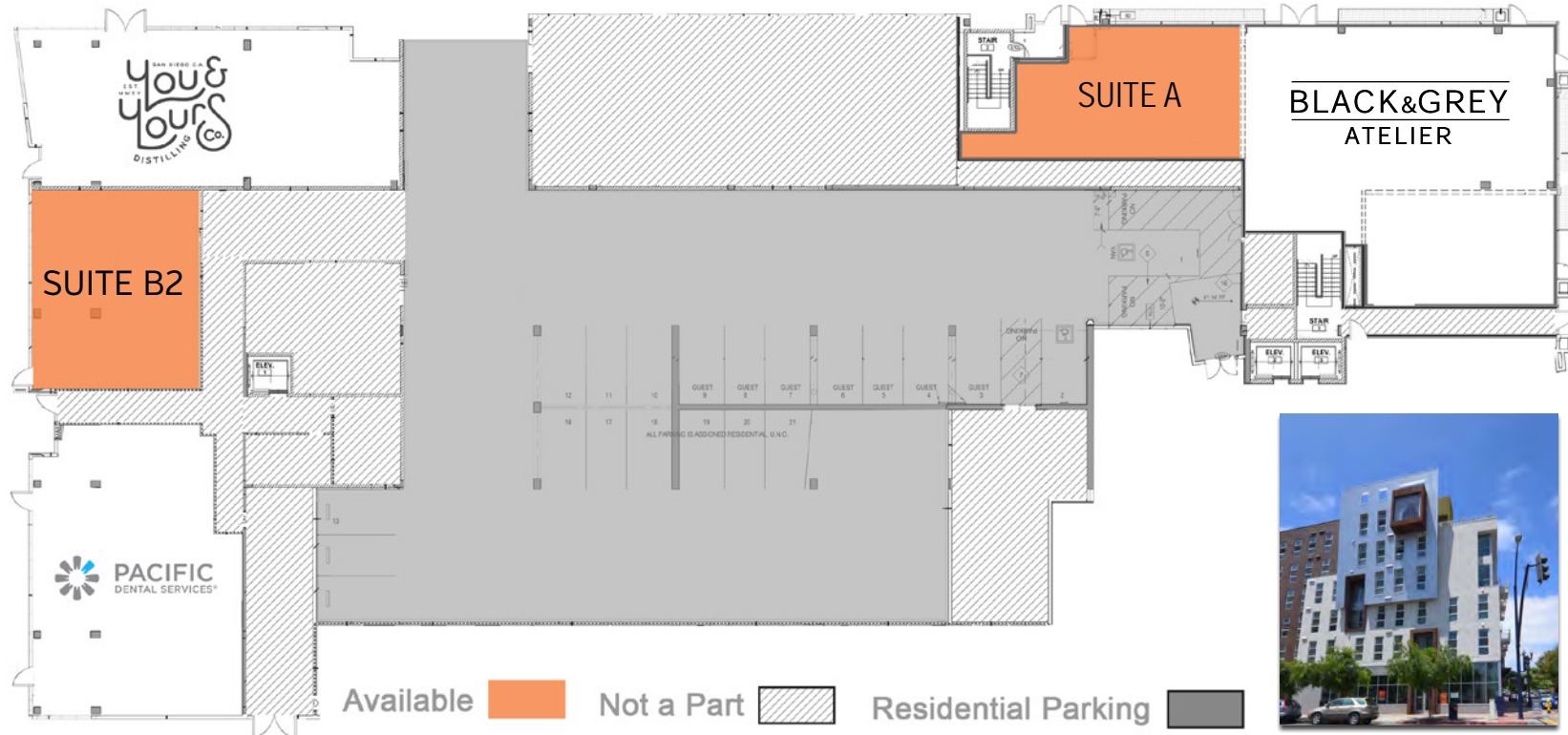
# SITE PLAN & AVAILABILITIES



15th STREET



"G" STREET



MARKET STREET



**Frank Clark** | Principal Broker  
 619.994.7136 | CA DRE # 01919315  
[frank.clark@spireassets.com](mailto:frank.clark@spireassets.com)

**SPIRE**  
[www.spireassets.com](http://www.spireassets.com)

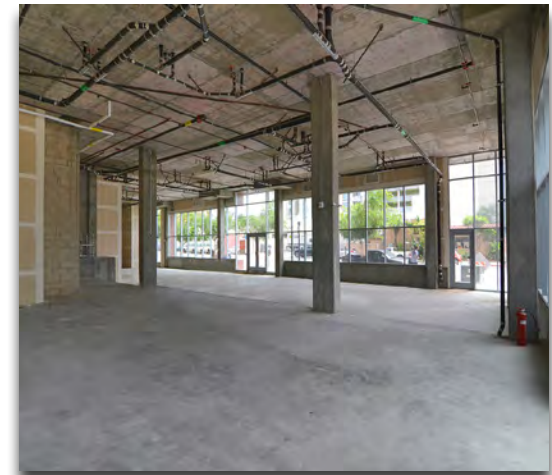
**William Clemeno** | Advisor  
 858.717.0172 | CA DRE # 02060538  
[william.clemeno@spireassets.com](mailto:william.clemeno@spireassets.com)

The information presented here is deemed to be accurate, but it has not been independently verified. We make no guarantee, warranty or representation. It is your responsibility to independently confirm accuracy and completeness. All SPIRE businesses are independently owned and operated.

# FLOOR PLAN

## SUITE A

RSF	DESCRIPTION
1,162	<ul style="list-style-type: none"><li>• Strong retail exposure on 15th Street</li><li>• Expansive window line</li><li>• 18-Foot ceilings</li></ul>



Frank Clark | Principal Broker

619.994.7136 | CA DRE # 01919315

[frank.clark@spireassets.com](mailto:frank.clark@spireassets.com)

**SPIRE**

[www.spireassets.com](http://www.spireassets.com)

William Clemeno | Advisor

858.717.0172 | CA DRE # 02060538

[william.clemeno@spireassets.com](mailto:william.clemeno@spireassets.com)

The information presented here is deemed to be accurate, but it has not been independently verified. We make no guarantee, warranty or representation. It is your responsibility to independently confirm accuracy and completeness. All SPIRE businesses are independently owned and operated.

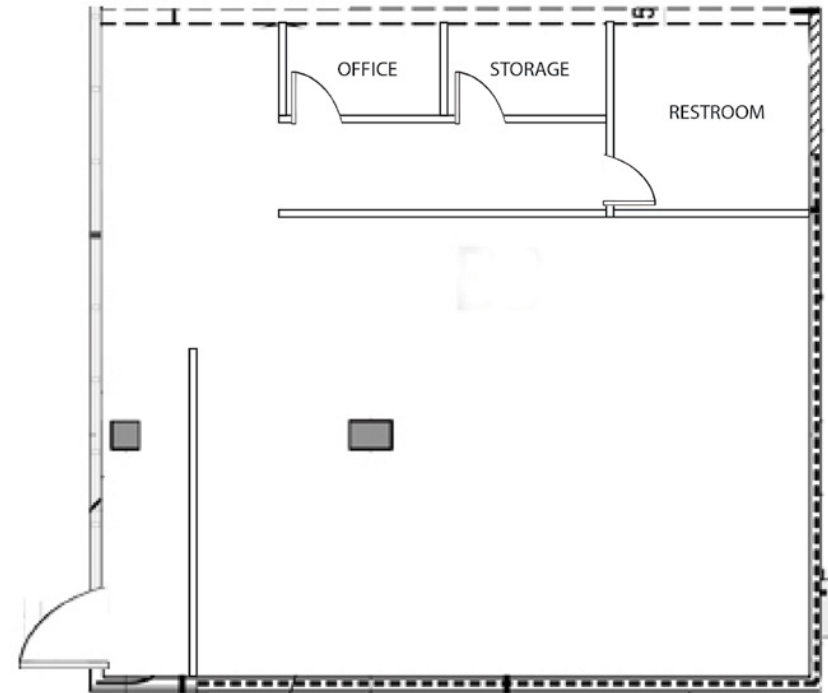


# FLOOR PLAN



## SUITE B2

RSF	DESCRIPTION
1,456	<ul style="list-style-type: none"><li>• Expansive window line fronting busy G Street</li><li>• Directly across the street from planned East Village Green</li><li>• “Newly” built out with restroom, 2 small offices / storage and lighting fixtures</li><li>• Adjacent tenants include Pacific Dental Services and You &amp; Yours Craft Distillery &amp; Tasting Room</li></ul>



**Frank Clark** | Principal Broker  
619.994.7136 | CA DRE # 01919315  
[frank.clark@spireassets.com](mailto:frank.clark@spireassets.com)

**SPIRE**  
[www.spireassets.com](http://www.spireassets.com)

**William Clemeno** | Advisor  
858.717.0172 | CA DRE # 02060538  
[william.clemeno@spireassets.com](mailto:william.clemeno@spireassets.com)

The information presented here is deemed to be accurate, but it has not been independently verified. We make no guarantee, warranty or representation. It is your responsibility to independently confirm accuracy and completeness. All SPIRE businesses are independently owned and operated.



# LOCAL AMENITIES & MAP



Frank Clark | Principal Broker

619.994.7136 | CA DRE # 01919315

[frank.clark@spireassets.com](mailto:frank.clark@spireassets.com)

**SPIRE**

[www.spireassets.com](http://www.spireassets.com)

William Clemeno | Advisor

858.717.0172 | CA DRE # 02060538

[william.clemeno@spireassets.com](mailto:william.clemeno@spireassets.com)

The information presented here is deemed to be accurate, but it has not been independently verified. We make no guarantee, warranty or representation. It is your responsibility to independently confirm accuracy and completeness. All SPIRE businesses are independently owned and operated.